

Crushed Stone Address

- Made with real crushed stone.
- Rich stone textured background with polished border.
- UV and weather resistant, with color throughout material.
- Deeply engraved numbers: single line: 4" numbers; double line: 3" numbers and 1.25" letters.
- Five styles to choose from.
- Stone colors: Sandstone or Slate (gray).
- Number colors: Black, White, Mocha.



Knollbrook Vertical
3-1/4" x 19"



Riviera Arch (15" x 9")



Verona Serpentine (15" x 9-1/2")



Oakfield Oval (14" x 10")



Chesterfield Rectangle (15" x 7-1/2")

Solid Granite Address

- Made with solid granite.
- Deeply engraved numbers: single line: 4" numbers; double line: 3" numbers and 1.25" letters.
- Four styles to choose from.
- Many granite colors available.
- Number colors: Black, White, Mocha, Gold.
- Optional aluminum stakes: 1" wide by 18" long, black.



Wexford Vert.
4" x 19"



Executive Rectangle (13" x 7")



Ridgecrest Arch (15" x 7-3/4")



Executive Rectangle (13" x 7")



Rockport Oval (15" x 7")

Crushed Stone Colors



Sandstone



Slate



Black



White



Mocha



Gold

Number Colors

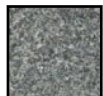
Granite Colors



Autumn Leaf Natural



Black Polished



Black Natural



Black Slate



Emerald Green Polished



Five Color Natural



Quartzite (color varies)



Sand Granite Polished

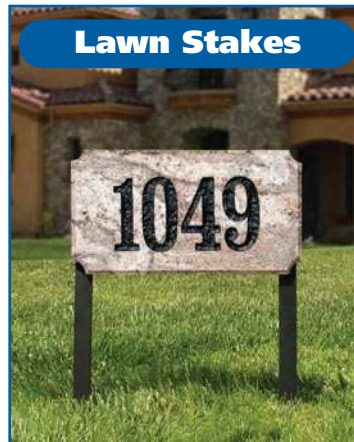


Sand Granite Natural



White Granite Natural

Lawn Stakes



Optional lawn stakes are now available with our crushed stone or granite plaques. Aluminum stakes are 1" wide by 18" long and available in black.

Store Display

A store display is available to help you sell our plaques. Please call for details.



QUALARC
www.qualarc.com